

SECTION 7, T.6N., R1.W., S.L.B. & M.

IN TOWN OF HARRISVILLE & OGDEN CITY

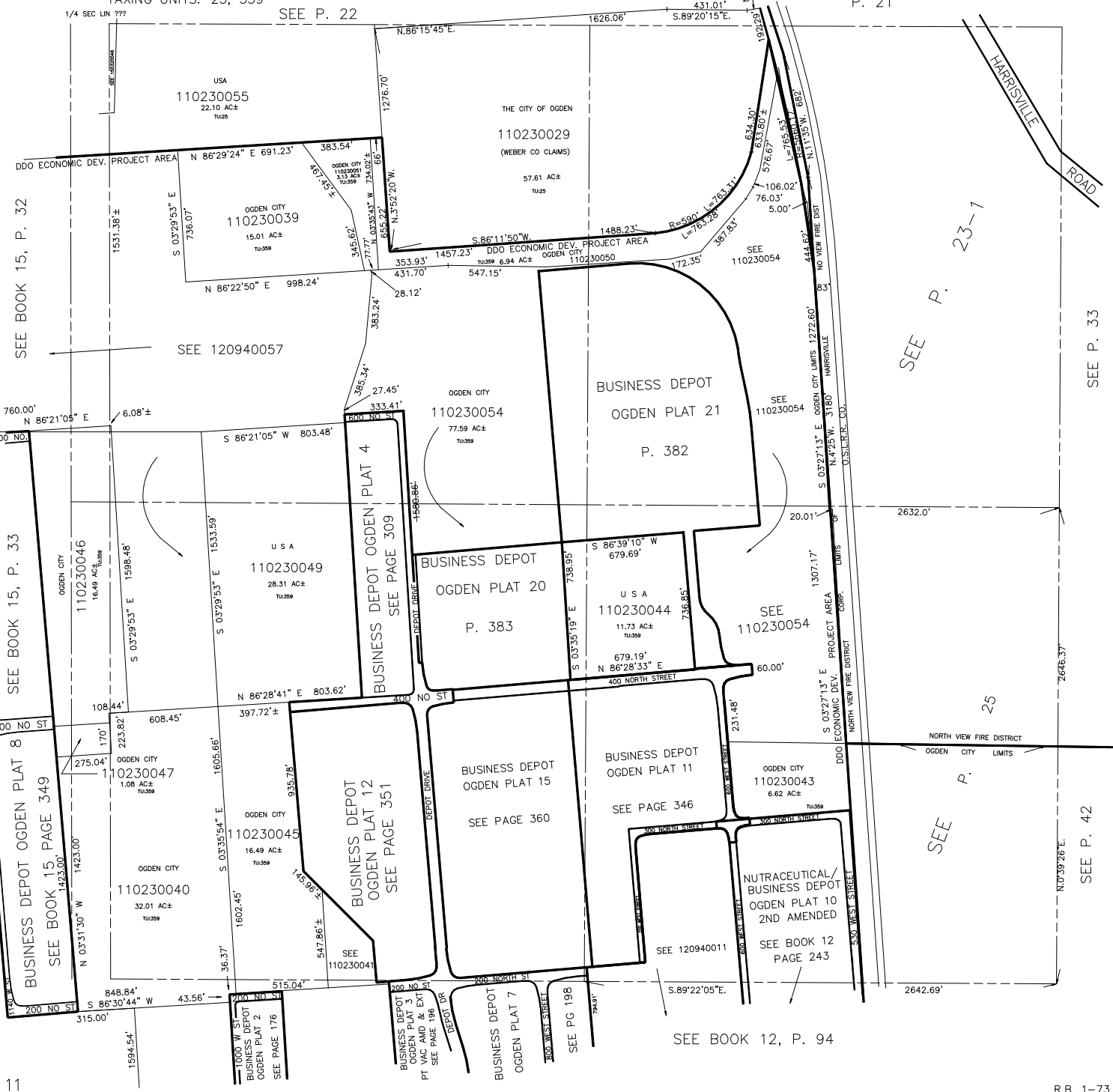
SCALE 1" = 400'

TAXING UNITS: 25, 359

SEE P. 22

SEE P. 21

1/4 SEC LIN ???



SEE BOOK 15, P. 32

SEE 120940057

SEE BOOK 15, P. 33

BUSINESS DEPOT OGDEN PLAT 4  
SEE PAGE 309

BUSINESS DEPOT OGDEN PLAT 8  
SEE BOOK 15, PAGE 349

BUSINESS DEPOT OGDEN PLAT 12  
SEE PAGE 351

BUSINESS DEPOT OGDEN PLAT 21  
P. 382

BUSINESS DEPOT OGDEN PLAT 20  
P. 383

BUSINESS DEPOT OGDEN PLAT 15  
SEE PAGE 360

BUSINESS DEPOT OGDEN PLAT 11  
SEE PAGE 346

NUTRACEUTICAL/BUSINESS DEPOT OGDEN PLAT 10 2ND AMENDED  
SEE BOOK 12 PAGE 243

SEE BOOK 12, P. 94

SEE P. 23-1

SEE P. 25

SEE P. 33

SEE P. 42